

Lesson Plan

<p>Introduction</p> <p>1. Vocal warm-up</p> <p>2. Sing a new canon:</p> <p>Review familiar melody</p>	<p><i>Morning Is Come</i> <i>Early To Bed</i> (see below)</p> <p>Sing and keep the beat. Sing with solfège syllables. Sing with letter names. Review <i>Alleluia</i> in minor. Sing and keep the beat. Sing with rhythm syllables. Sing with rhythm syllables and conduct. Sing with solfège syllables. Sing with letter names.</p>
<p>Main Section</p> <p>Review homework</p> <p>Dictation</p> <p>Music theory</p>	<p>Chapter 9, 9.1–9.6</p> <p>Choose from Chapter 9 resources on the companion website</p> <p>9.7 Harmonic Minor Scale and Melodies</p> <p>9.8 Determining the Intervals Between the Notes of the Harmonic Minor Scale</p> <p>9.9 Writing Harmonic Minor Scales and Melodies on the Staff</p> <p>9.10 Melodic Minor Scales and Melodies</p> <p>9.11 Determining the Intervals between the Notes of the Melodic Minor Scale</p> <p>9.12 Writing Melodic Minor Scales and Melodies Using Accidentals</p>

Homework assignments	<p>9.13 Identifying the Key of a Composition</p> <p>Singing: Melodies <i>Ah, Poor Bird</i> and <i>Louisiana March</i>, up to three sharps and three flats. Also sing with solfège, numbers, and letter names.</p> <p>Theory: Complete theory, Chapter 9, 9.7–9.13. Complete theory drills for this chapter on the skills CD.</p> <p>Writing: Be able to write focus melodies in different keys and meters.</p> <p>Intervals: Practice singing the intervals of the harmonic and melodic minor scale.</p> <p>Performance: play focus melodies up to three sharps and three flats on the piano.</p> <p>Composition/Improvisation: Do comp/improv exercises from companion website.</p> <p>Sight Singing: Select examples from Chapter 9</p> <p>Memory: Be able to sing all focus melodies with solfege and rhythm syllables and notate these melodies in different keys and time signatures.</p>
Close	<p>Review of musical materials and concepts covered during the lecture.</p> <p>Review canons from beginning of the lesson.</p>

Morning is Come

William H. Bradbury (1816-1868)

Morn - ing is come, Night is a - way,

Rise with the sun _____ and _____ wel - come the day.

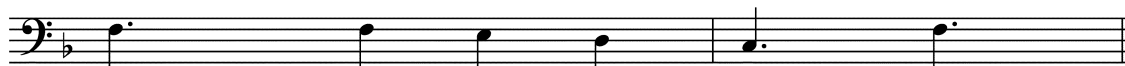
Early To Bed



Ear - ly to bed and ear - ly to rise,



Makes a man health - y and wealth - y and wise,



Wise, health - y and wealth - - - y.