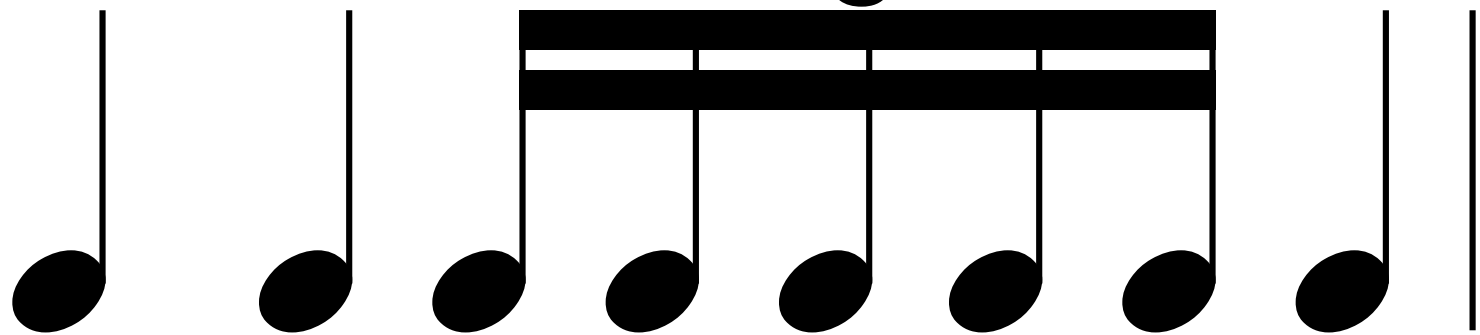
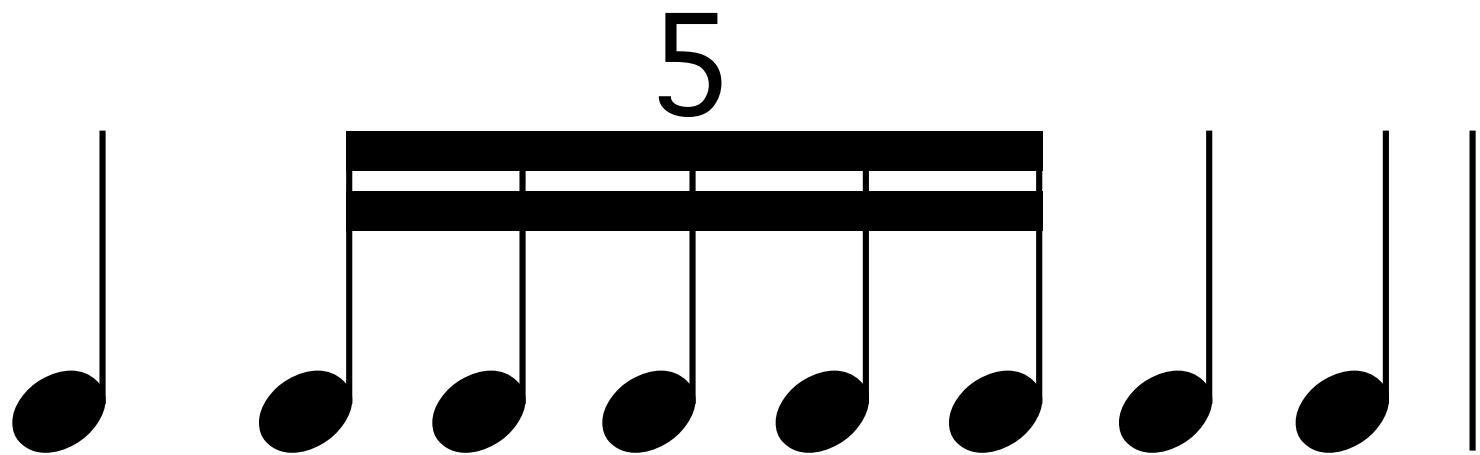


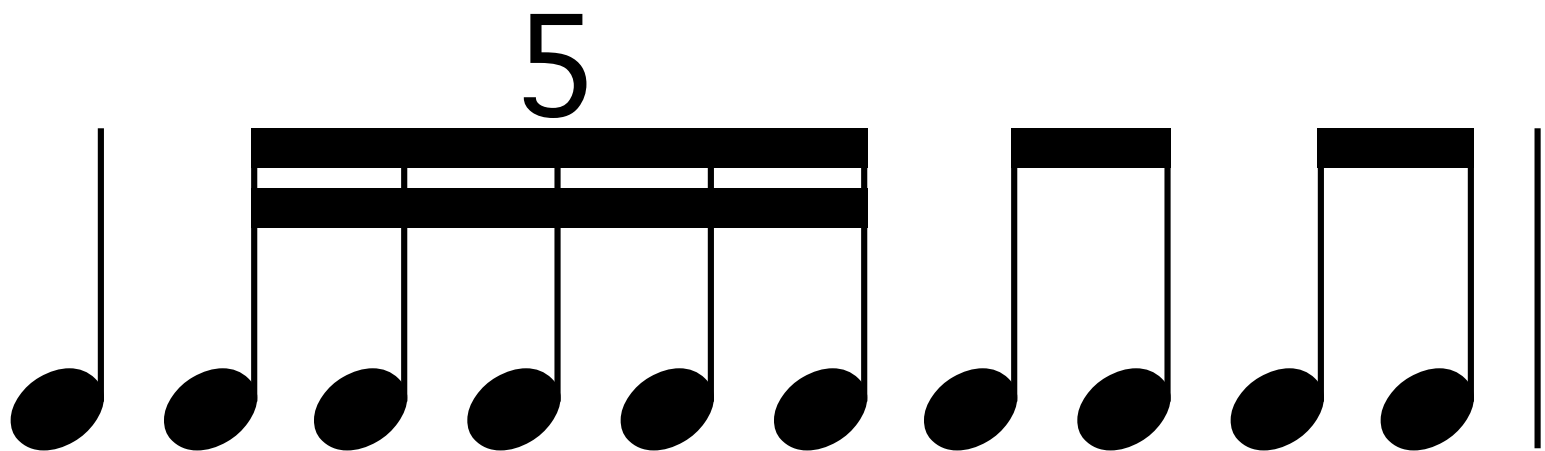
4/4



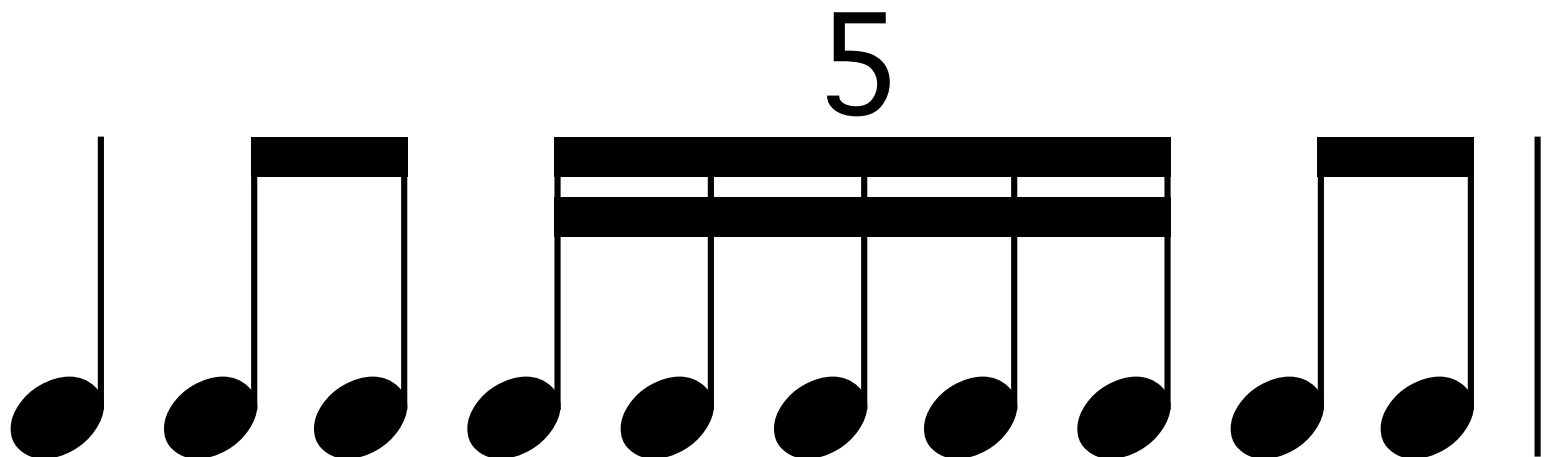
4/4



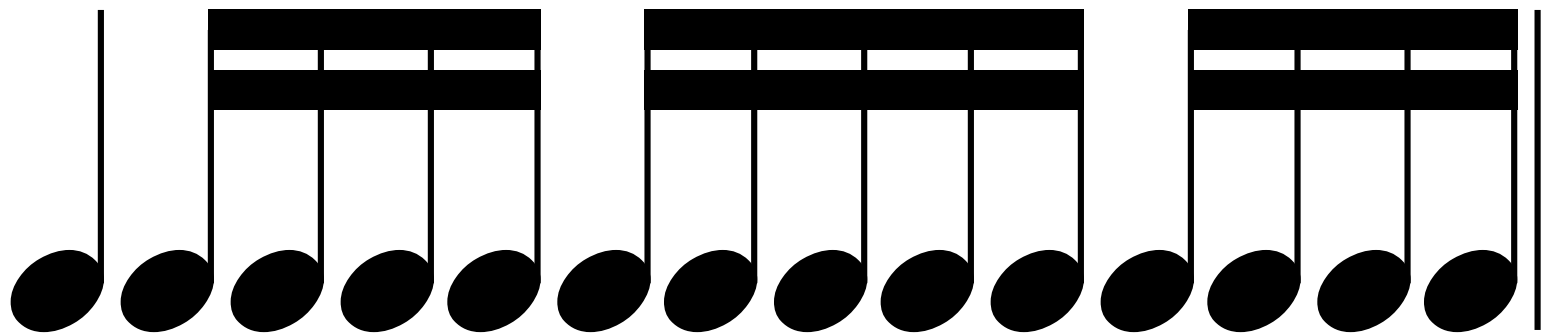
4/4



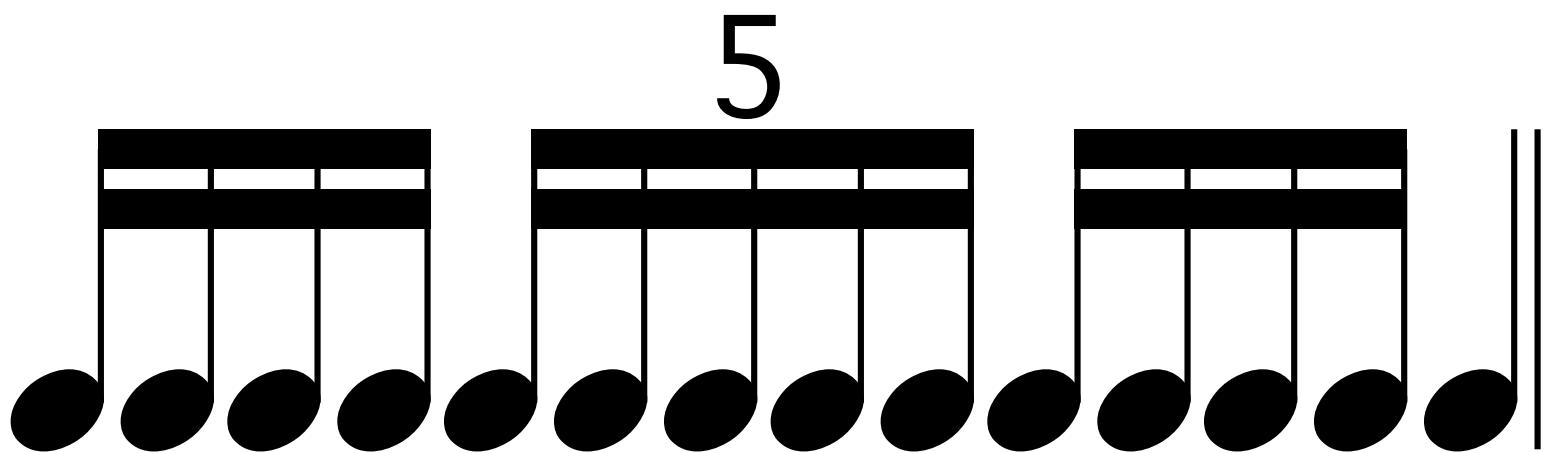
4/4

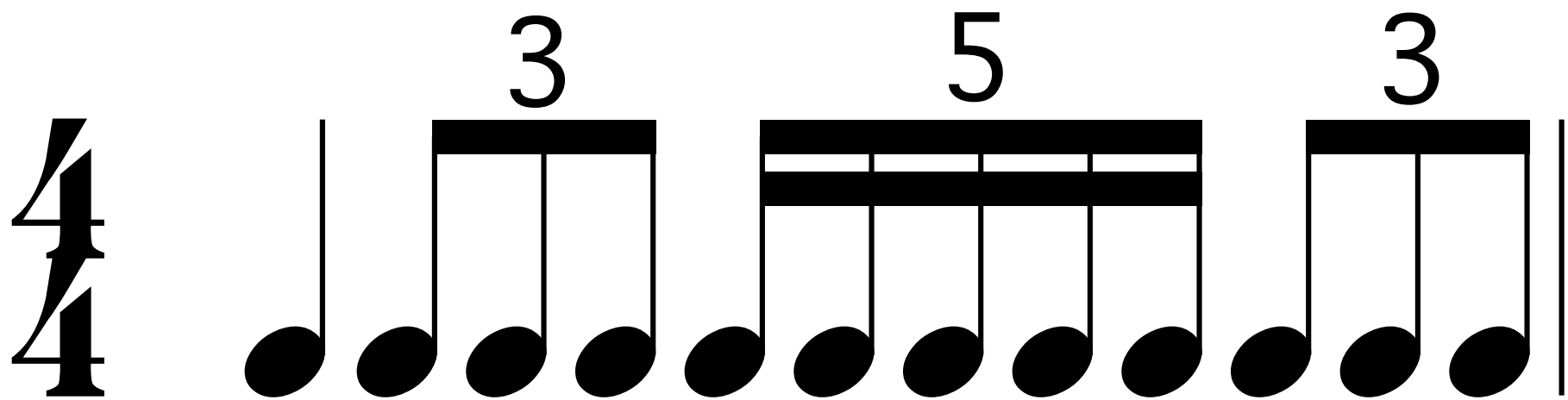
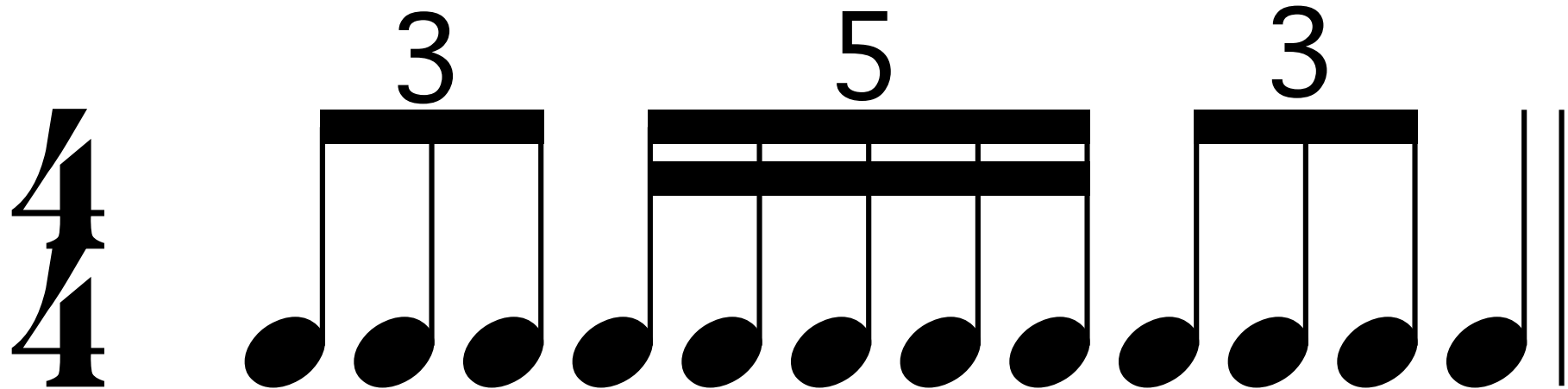


4/4

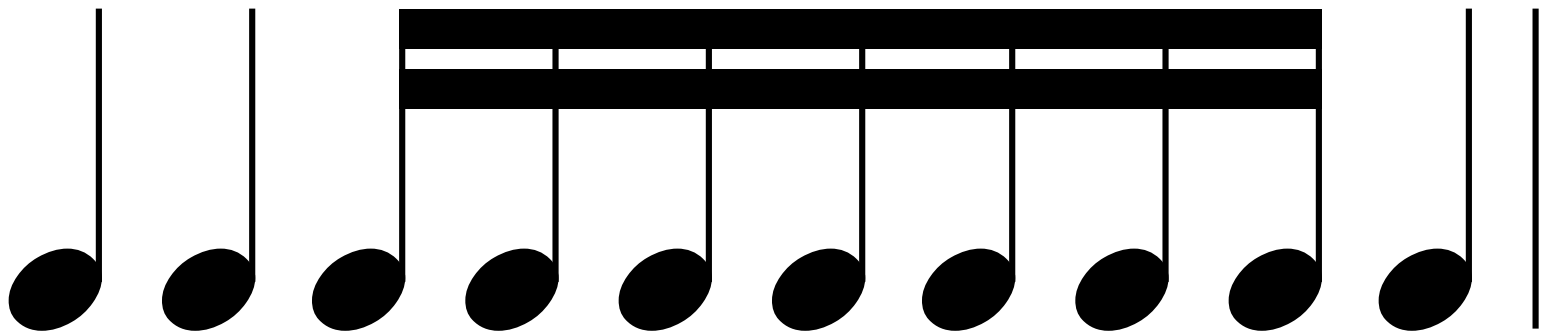


4/4

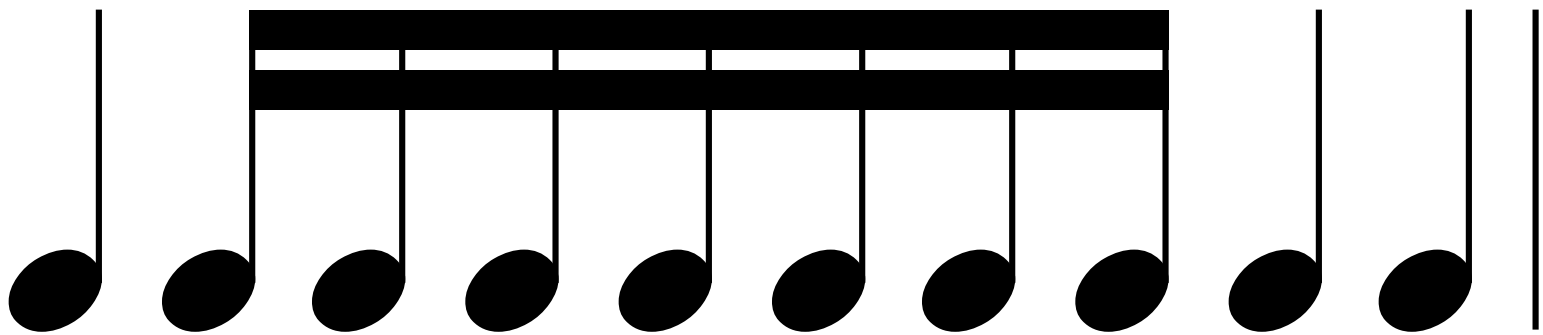




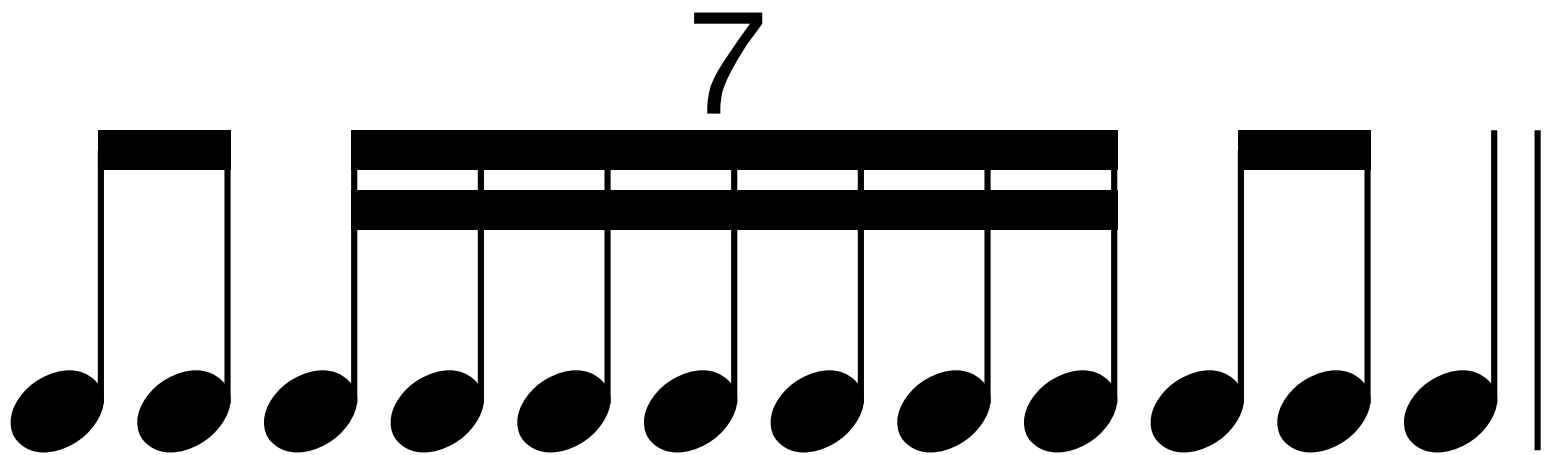
4/4



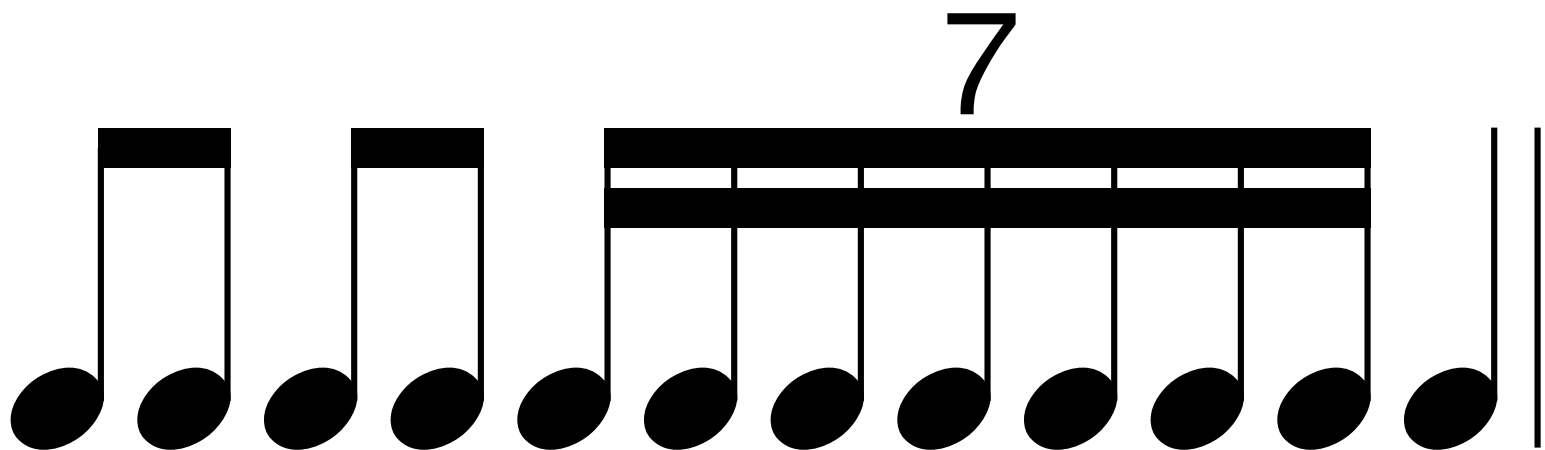
4/4



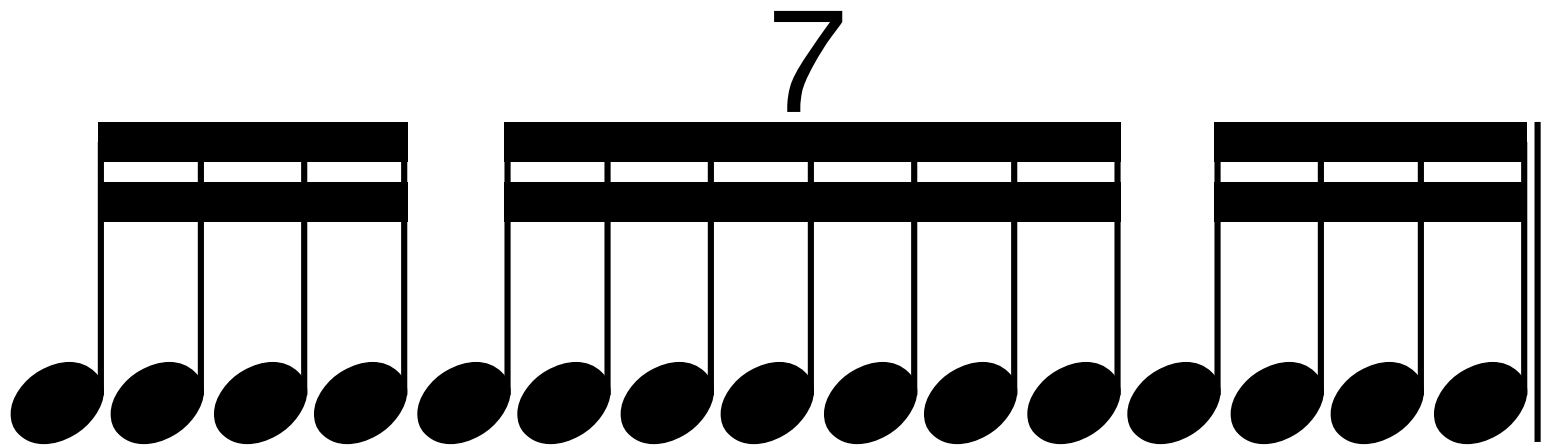
4/4



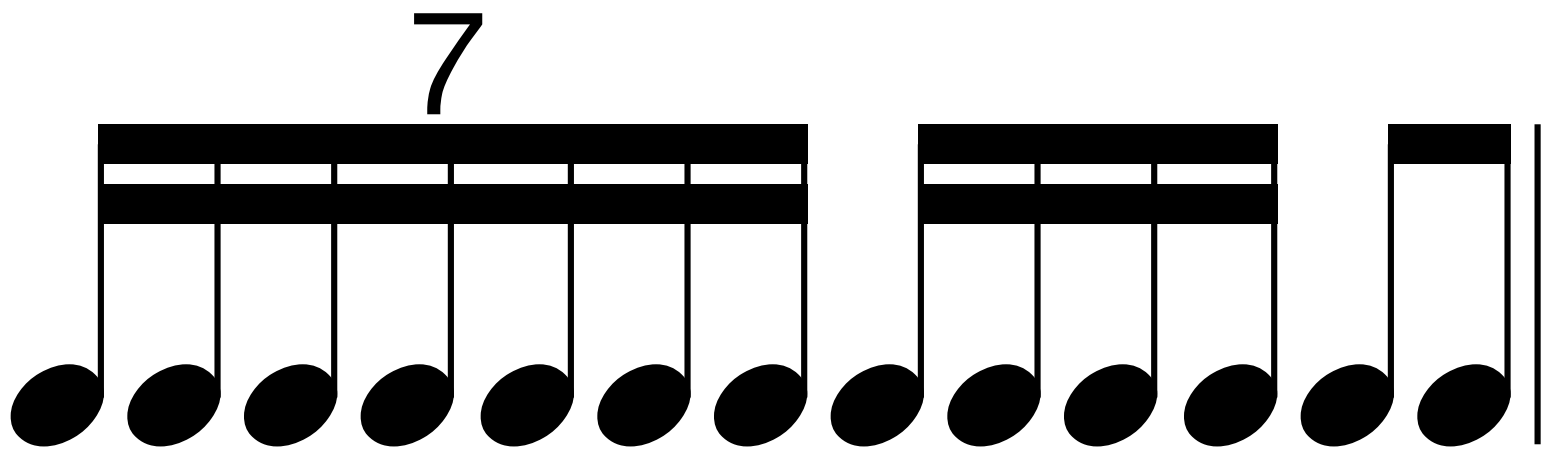
4/4



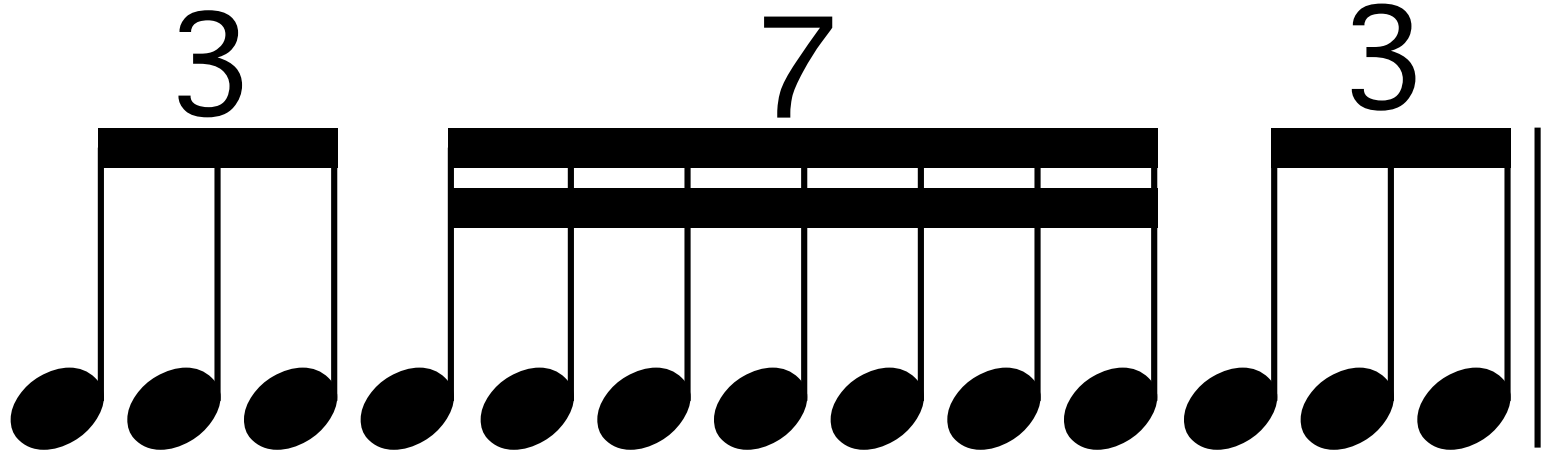
3
4



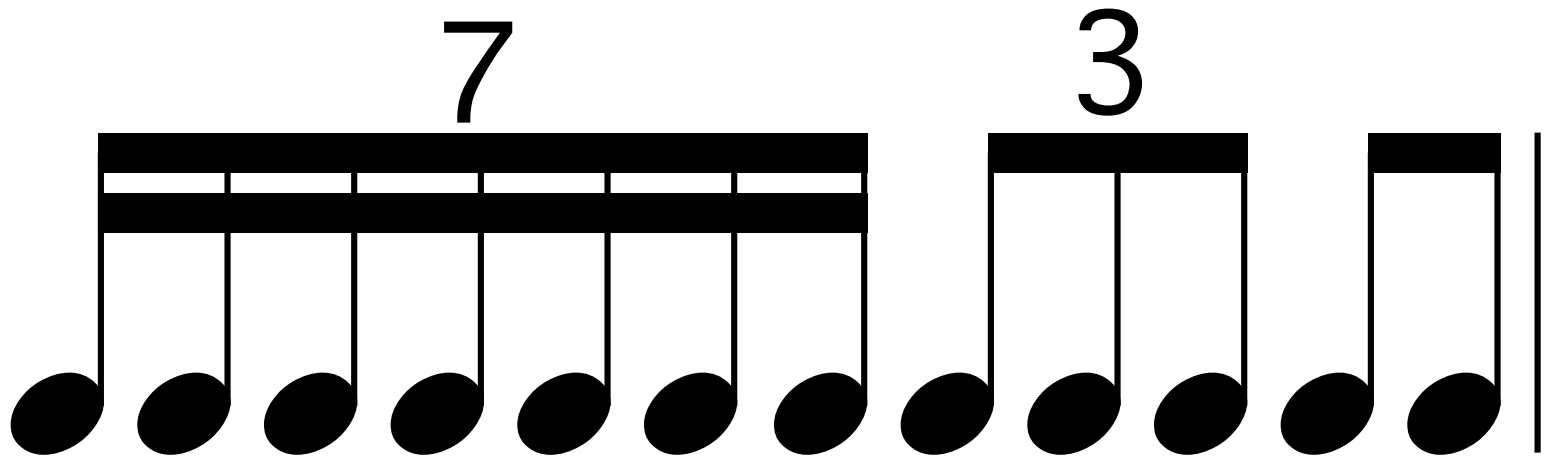
3
4



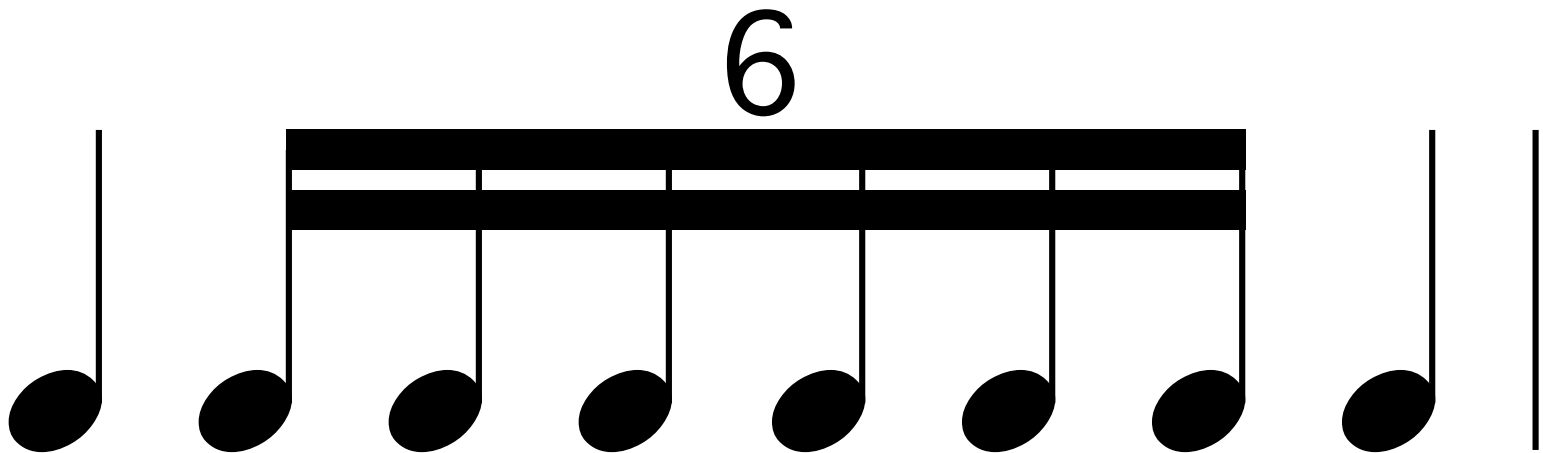
3
4



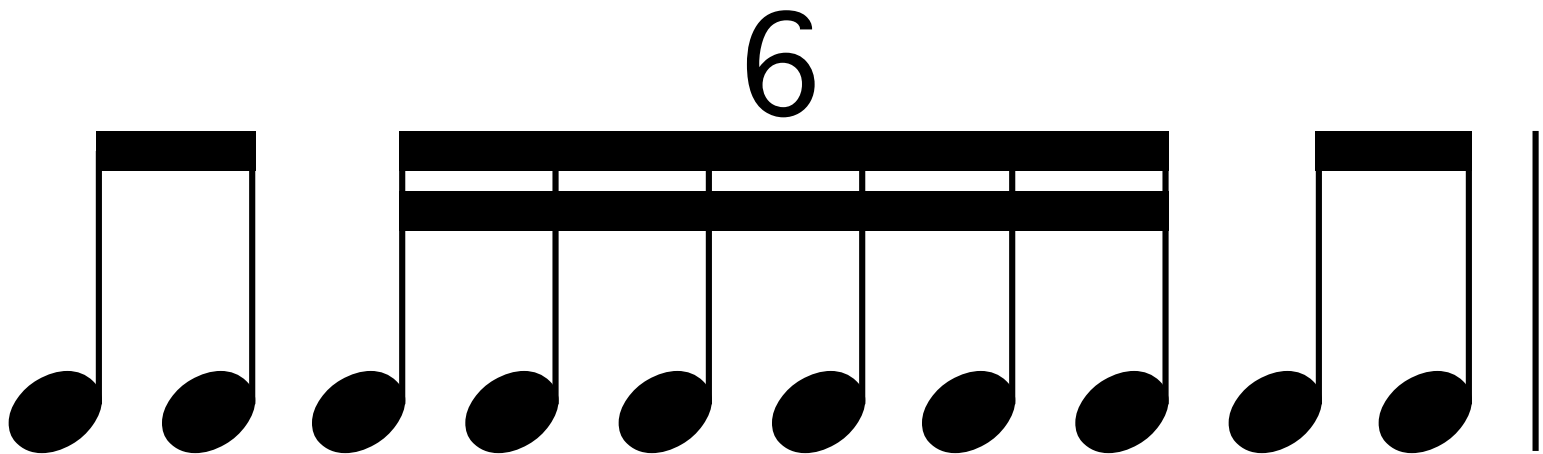
3
4



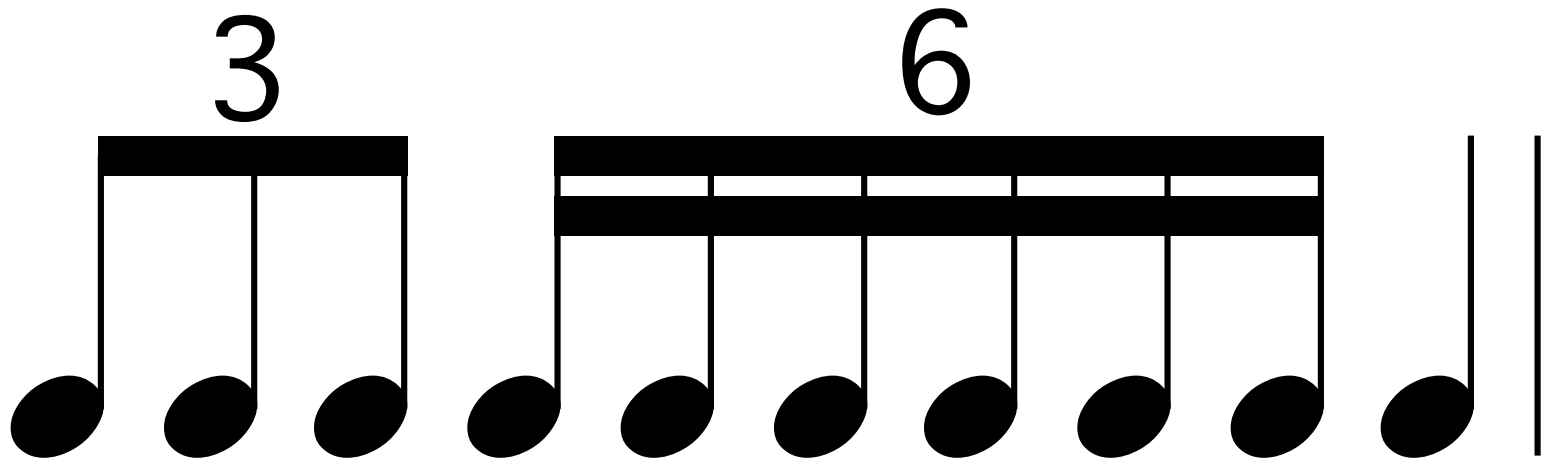
3
4



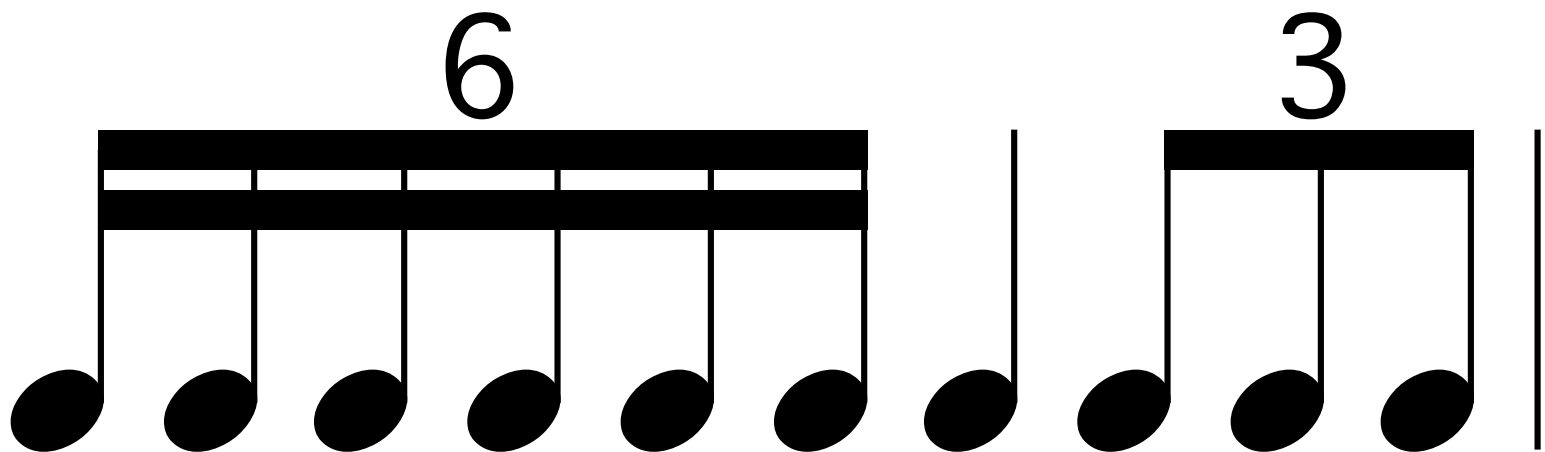
3
4



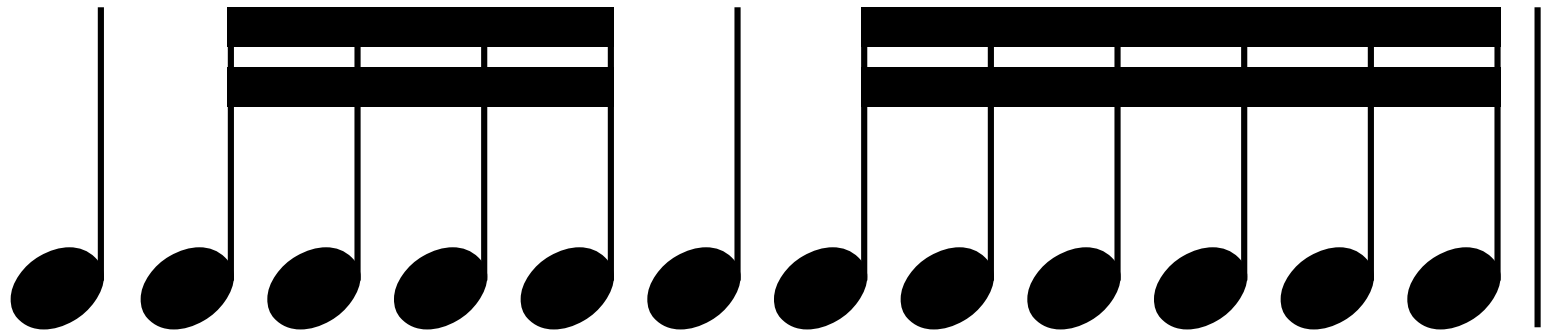
3
4



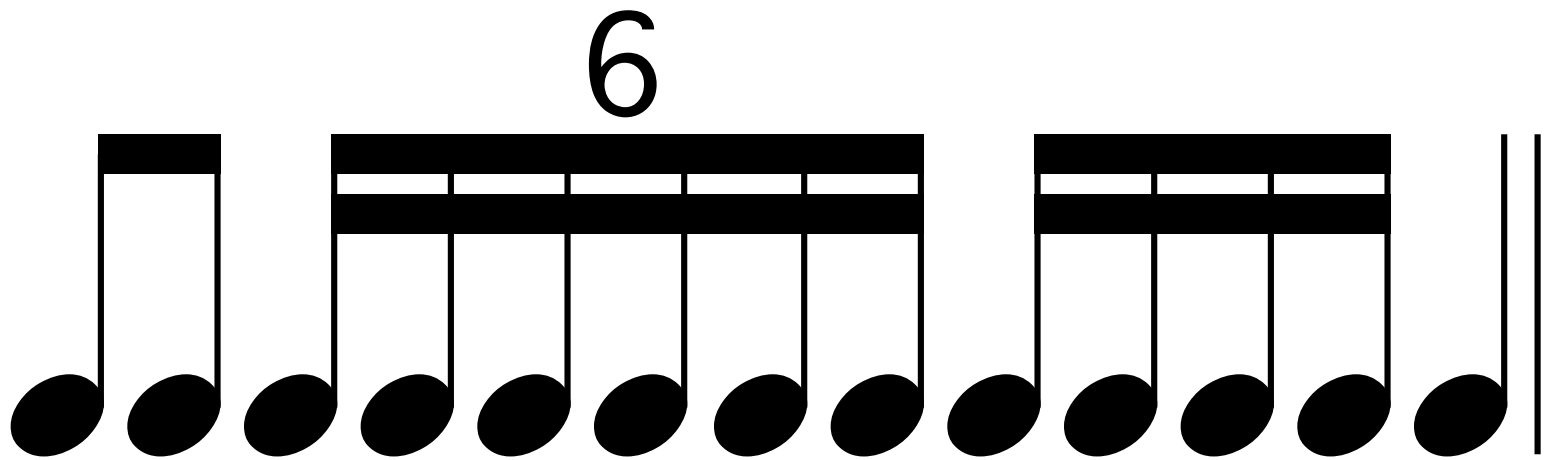
3
4



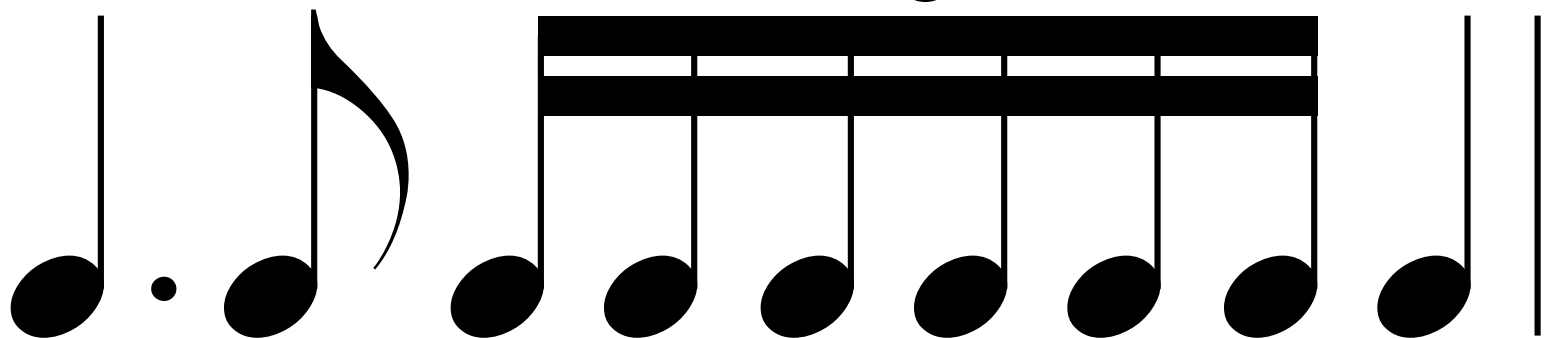
4/4



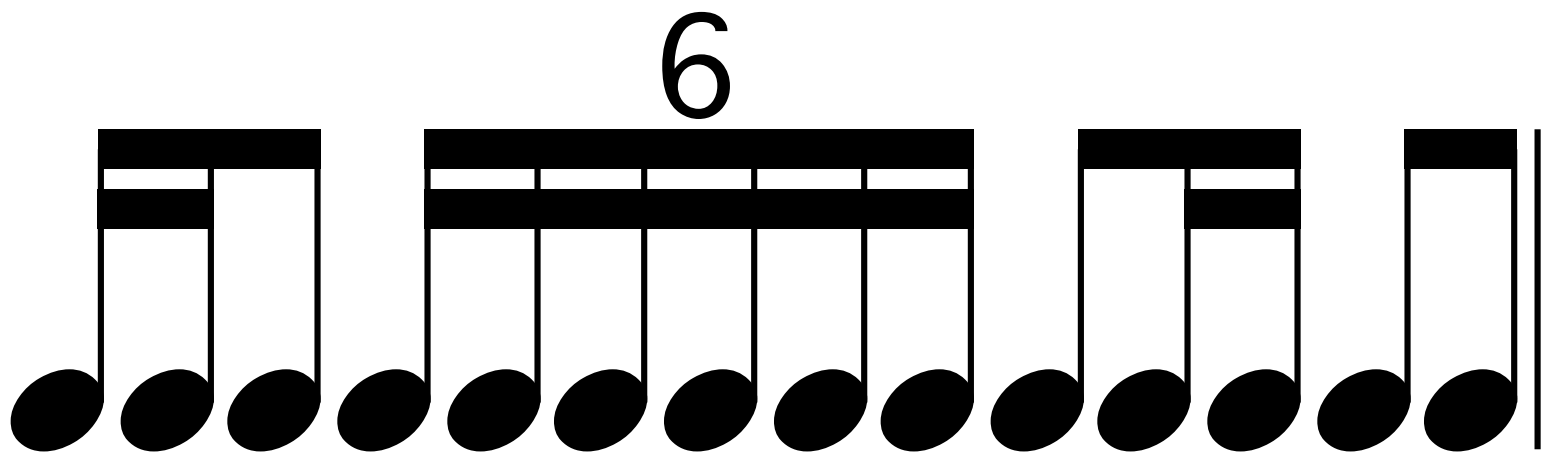
4/4



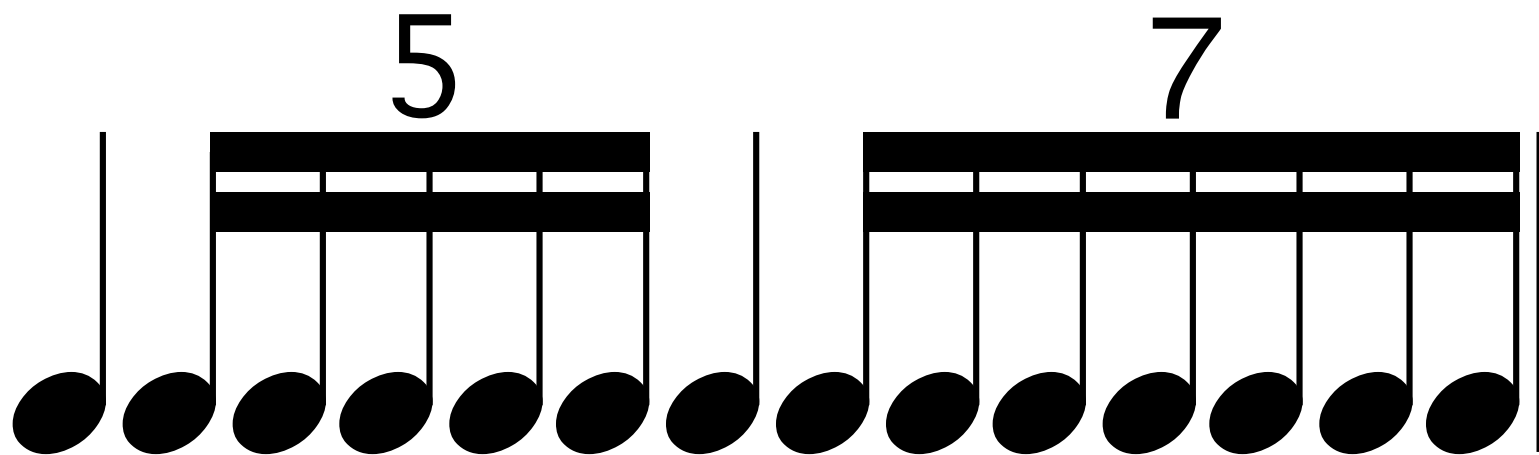
4/4



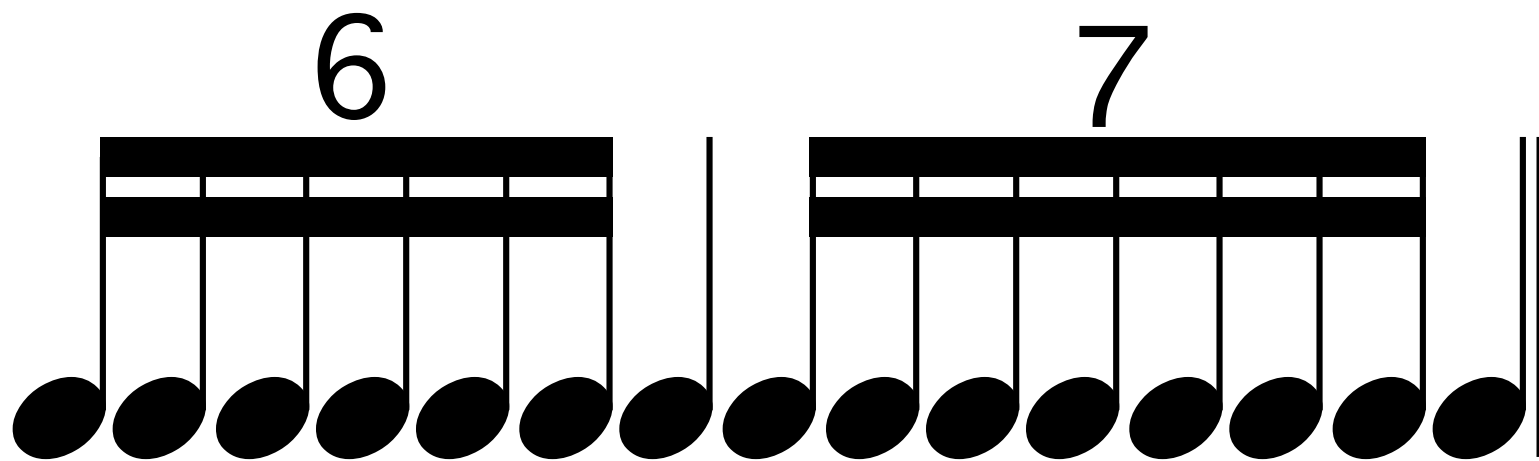
4/4



4/4



4/4



4/4

5 6

Musical notation for two measures in 4/4 time. The first measure is labeled '5' and contains five eighth notes. The second measure is labeled '6' and contains six eighth notes. Each measure is followed by a quarter rest and ends with a double bar line.

4/4

7

Musical notation for two measures in 4/4 time. The first measure is labeled '7' and contains seven eighth notes. The second measure contains three eighth notes, followed by a quarter rest, and ends with a double bar line.