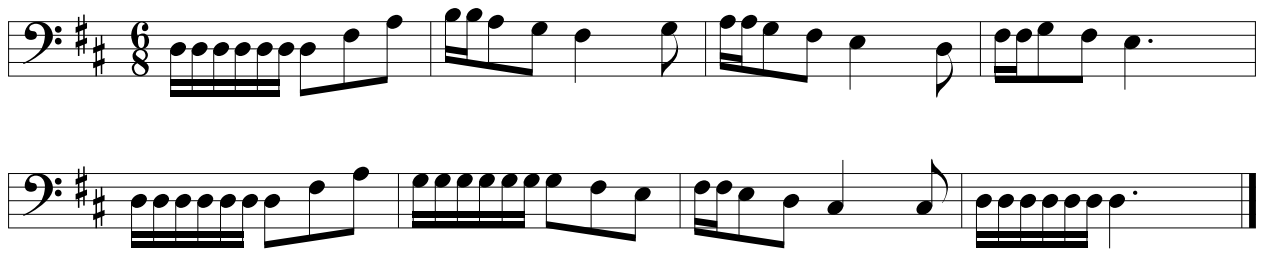
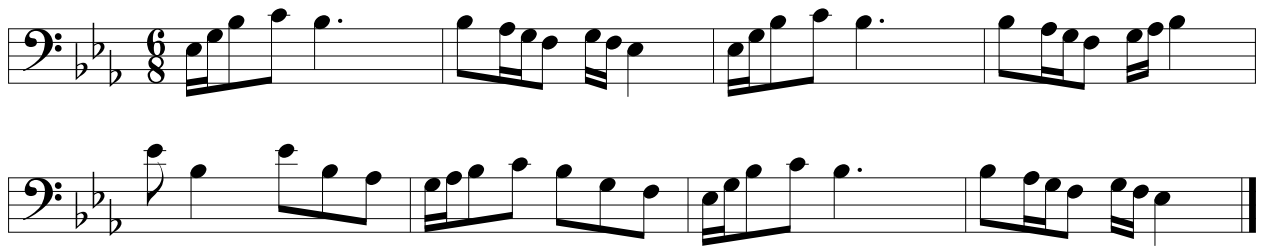


Progressive Sight Singing

Chapter 15: Additional Melodic Exercises

Major and Minor Modes, Tonic and Dominant, Compound Meters More Rhythms

1. 

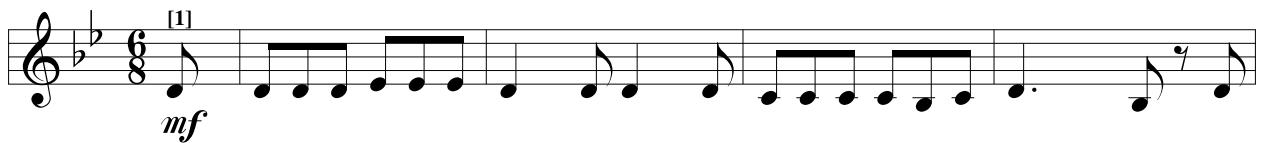
2. 

3. 

Canon: 3 voices

Allegro

Victorian

4. 

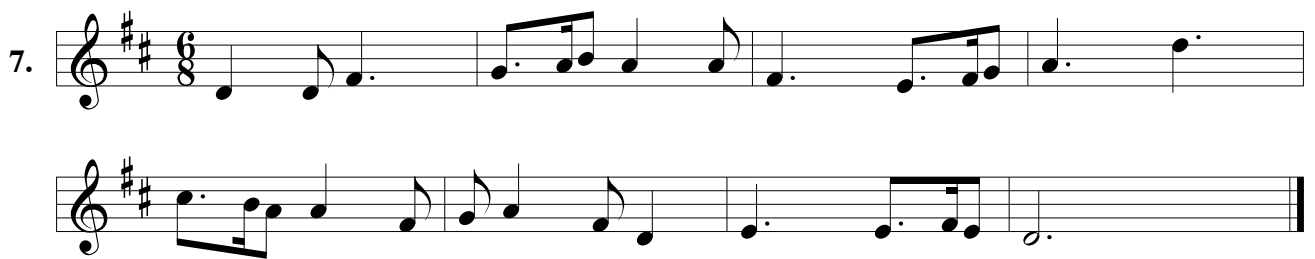


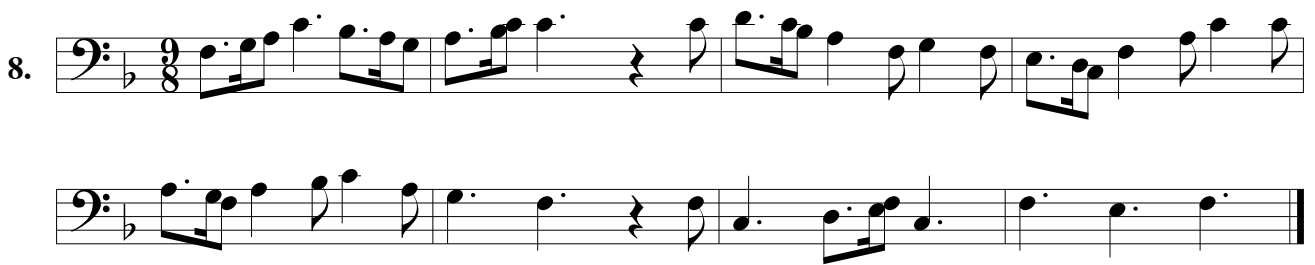




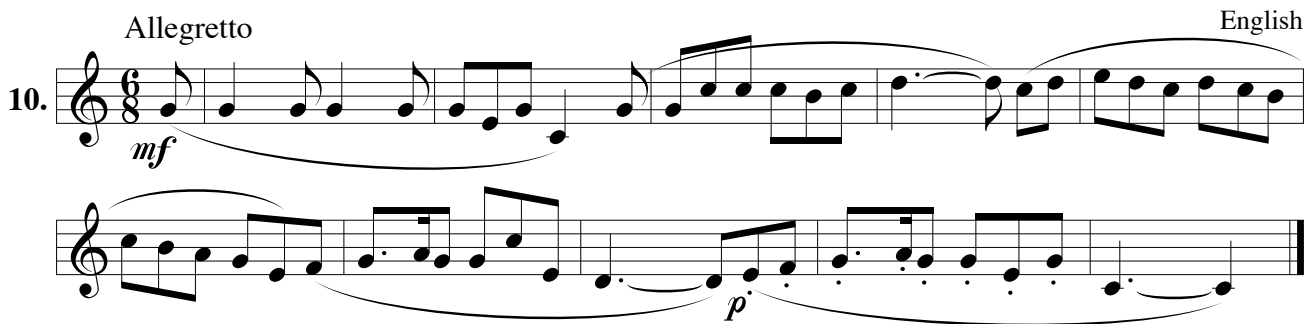
5. 

6. 

7. 

8. 

9. 

10. *Allegretto* English


11. *Brio* English


D.C. al Fine

12. *Mässig langsam* German

Canon: 4 voices Deuteromelia, 1609

13.

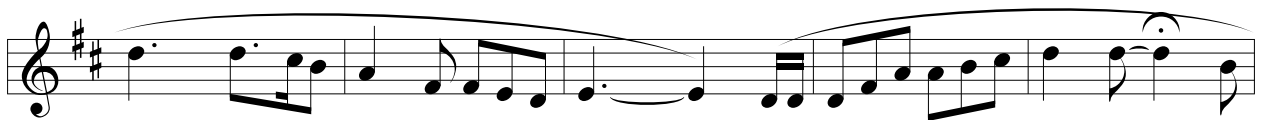
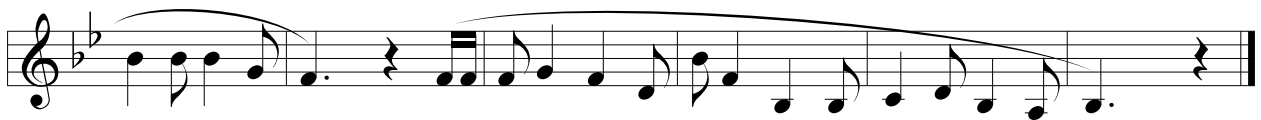
Canon: 3 voices Pierce

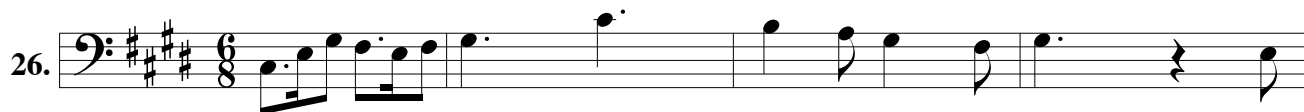
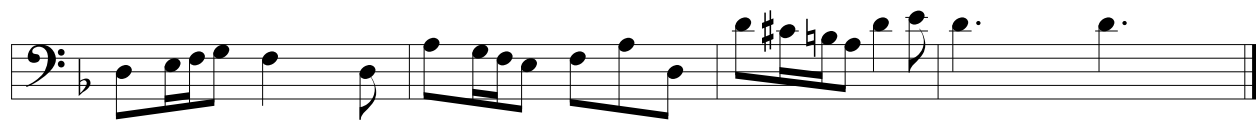
14.

15. English

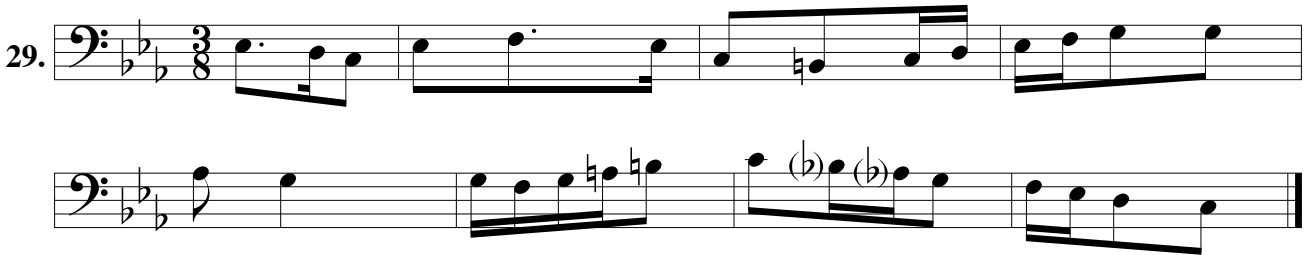
16.

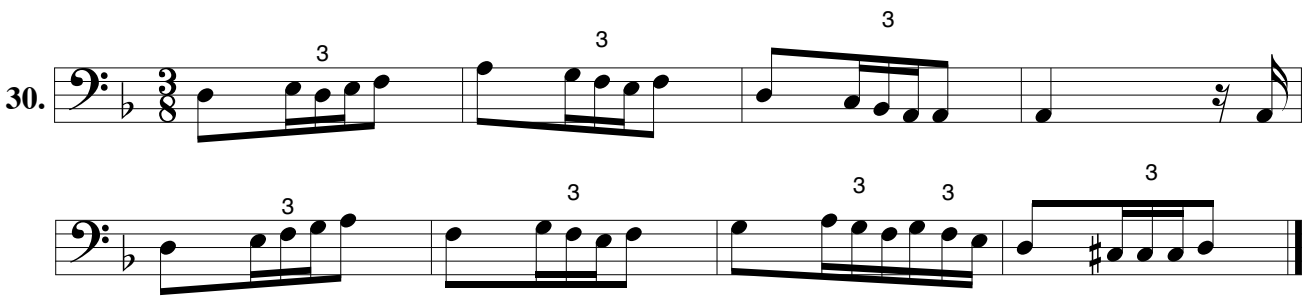
17.



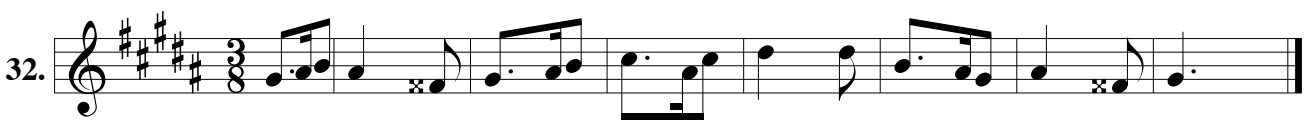


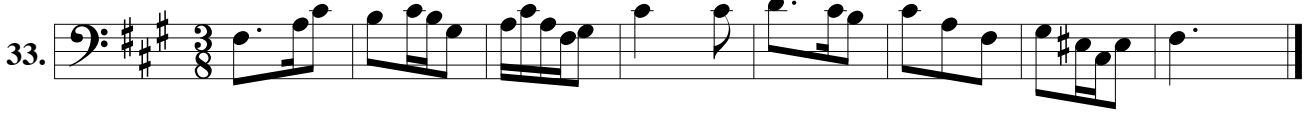
28.  Musical notation for measures 28-29, treble clef, 6/8 time signature, key signature of three flats. The first staff contains measures 28 and 29. The second staff contains measures 30 and 31.

29.  Musical notation for measures 30-31, bass clef, 3/8 time signature, key signature of three flats. The first staff contains measures 30 and 31. The second staff contains measures 32 and 33.

30.  Musical notation for measures 34-35, bass clef, 3/8 time signature, key signature of three flats, featuring triplets. The first staff contains measures 34 and 35. The second staff contains measures 36 and 37.

31.  Musical notation for measures 38-39, bass clef, 6/8 time signature, key signature of two sharps. The first staff contains measures 38 and 39. The second staff contains measures 40 and 41.

32.  Musical notation for measures 42-43, treble clef, 3/8 time signature, key signature of four sharps. The first staff contains measures 42 and 43. The second staff contains measures 44 and 45.

33.  Musical notation for measures 46-47, bass clef, 3/8 time signature, key signature of four sharps. The first staff contains measures 46 and 47. The second staff contains measures 48 and 49.

34. This system contains two staves of music in treble clef, 6/8 time, with a key signature of two flats. The first staff begins with a melodic line of eighth and quarter notes. The second staff continues the melody with a repeat sign at the end.

35. This system contains two staves of music in bass clef, 6/8 time, with a key signature of three sharps. The first staff features a steady eighth-note bass line. The second staff continues the bass line and includes a fermata over the final notes.

36. This system contains two staves of music in bass clef, 6/8 time, with a key signature of two sharps. Both staves feature eighth-note patterns with double-fingered notes (marked with a '2').

37. *Allegretto* *English* This system contains three staves of music in bass clef, 6/8 time, with a key signature of two flats. The first staff has a melodic line with a slur and the tempo marking 'Allegretto'. The second and third staves provide a rhythmic accompaniment with eighth-note patterns.

38. *Moderato* *English* This system contains two staves of music in bass clef, 6/8 time, with a key signature of three sharps. The first staff has a melodic line with a slur and the tempo marking 'Moderato'. The second staff provides a rhythmic accompaniment with eighth-note patterns.

German

39.

Spanish

40.

Allegretto

English

41.

Animato

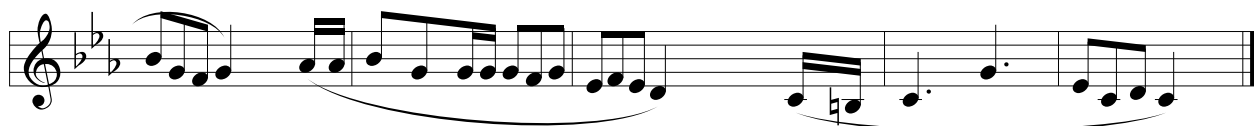
English

42.

Andante

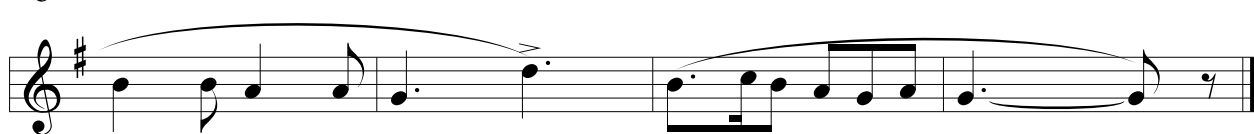
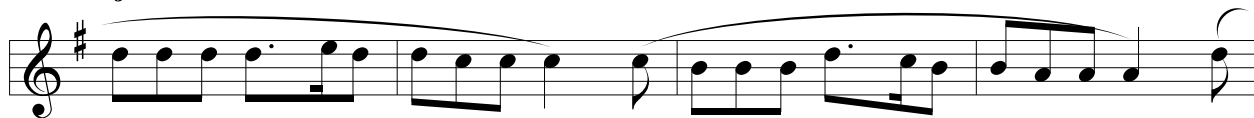
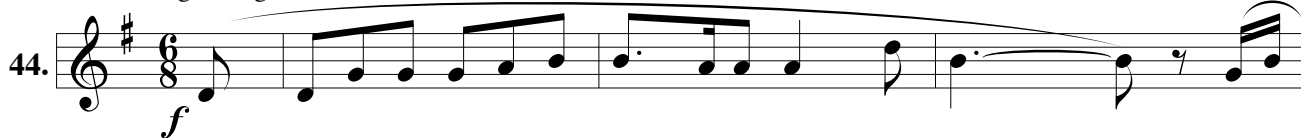
American

43.



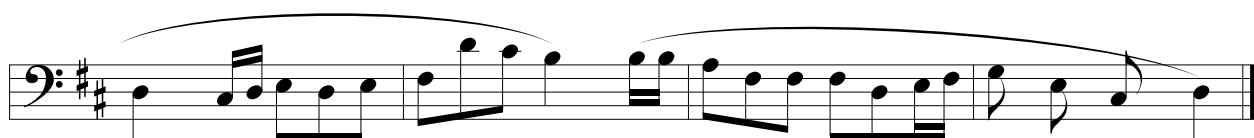
Mässig bewegt

German



Andante

English



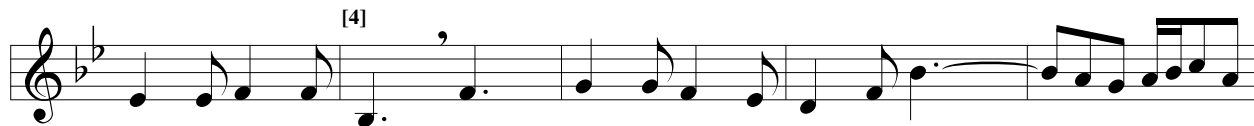
Allegretto

German



Canon: 4 voices

William Hayes (1707 - 1777)



48. $\bullet = 106$ French

49. Andantino English

50. Allegretto English

51. Andante English

52. Moderato English

53. Heiter German

p *mp*

mf *dim.* *mf*

54. Andantino (Note the intervals in the vi chord) Greek

p (*pp*) *cresc.*

mf *pp*

55. Allegro giocoso (Note the intervals in the vi chord) Norwegian

mf

dim. *mp* *pp*

più vivo

f *p*

pp *f* *p*

più p *dim.*